

vtech[®]
Baby

User's Manual

Stack & Discover Animals



© 2013 VTech
Printed in China
91-002825-001 (UK)

VTech understands that a child's needs and abilities change as they grow and with that in mind we develop our toys to teach and entertain at just the right level...

vtech Baby

Toys that will stimulate their interest in different textures, sounds and colours

I am...

...responding to colours, sounds and textures

...understanding cause and effect

...learning to touch, reach, grasp, sit-up, crawl and toddle

Birth-36 months



Pre-School

Interactive toys to develop their imagination and encourage language development

I want...

...to get ready for school by starting to learn the alphabet and counting

...my learning to be as fun, easy and exciting as can be

...to show my creativity with drawing and music so my whole brain develops

3-6 years



Electronic Learning Computers

Cool, aspirational and inspiring computers for curriculum related learning

I need...

...challenging activities that can keep pace with my growing mind

...intelligent technology that adapts to my level of learning

...National Curriculum based content to support what I'm learning at school

4-10 years



To learn more about this and other VTech® products, visit www.vtechuk.com

INTRODUCTION

Thank you for purchasing the **VTech® Stack & Discover Animals** learning toy!

The **Stack & Discover Animals** farm is full of learning fun! This toy includes five animals that can be stacked on top of one another on the base. The electronic base recognises the animals as they are placed teaching baby the name of the animal, the shape they are holding and the number on the shape! Press the three light-up buttons on the base to hear animal names and their sounds, numbers and shapes!

EGG BUTTON

**FIVE STACKING AND
NESTING ANIMALS**

**ON/OFF/VOLUME
CONTROL SWITCH**

**ELECTRONIC
BASE**

LIGHT-UP BUTTONS



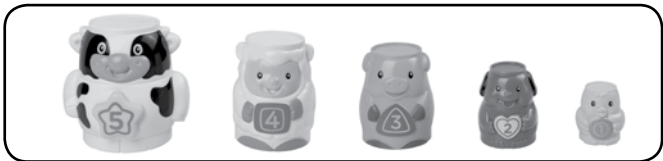
INCLUDED IN THIS PACKAGE



- One **electronic base**



- One **fence**

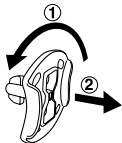


- Five stacking and nesting animals
- One user's manual

WARNING: All packing materials, such as tape, plastic sheets, packaging locks and tags are not part of this toy and should be discarded for your child's safety.

NOTE: Please keep this instruction manual as it contains important information.

Unlock the packaging locks:

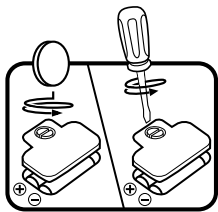


- ① Rotate the packing locks 90 degrees counter-clockwise.
- ② Pull out the packing locks.

GETTING STARTED

BATTERY INSTALLATION

1. Make sure the unit is turned **OFF**.
2. Locate the battery cover on the bottom of the unit. Use a coin or a screwdriver to loosen the screw.
3. Install 2 new 'AA' (AM-3/LR6) batteries following the diagram inside the battery box. (The use of new alkaline batteries is recommended for maximum performance.)
4. Replace the battery cover and tighten the screw to secure.



BATTERY NOTICE

- Use new alkaline batteries for maximum performance.
- Use only batteries of the same or equivalent type as recommended.
- Do not mix different types of batteries: alkaline, standard (carbon-zinc) or rechargeable (Ni-Cd, Ni-MH), or new and used batteries.
- Do not use damaged batteries.
- Insert batteries with the correct polarity.
- Do not short-circuit the battery terminals.
- Remove exhausted batteries from the toy.
- Remove batteries during long periods of non-use.
- Do not dispose of batteries in fire.
- Do not charge non-rechargeable batteries.
- Remove rechargeable batteries from the toy before charging (if removable).
- Rechargeable batteries are only to be charged under adult supervision.

Disposal of batteries and product



The crossed-out wheellie bin symbols on products and batteries, or on their respective packaging, indicates they must not be disposed of in domestic waste as they contain substances that can be damaging to the environment and human health.



The chemical symbols Hg, Cd or Pb, where marked, indicate that the battery contains more than the specified value of mercury (Hg), cadmium (Cd) or lead (Pb) set out in Battery Directive (2006/66/EC).

The solid bar indicates that the product was placed on the market after 13th August, 2005.

Help protect the environment by disposing of your product or batteries responsibly.

For more information, please visit:

www.recycle-more.co.uk

www.recyclenow.com

ASSEMBLY INSTRUCTIONS

With the **VTech® Stack & Discover Animals**, safety comes first. To ensure your child's safety, please ensure this product is assembled by an adult.

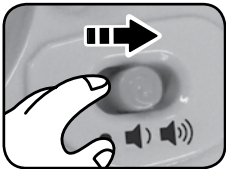
Insert the fence into the back of the electronic base. Push the fence until you hear it click into place.



PRODUCT FEATURES

1. ON/OFF/VOLUME CONTROL SWITCH

To turn the unit **ON**, slide the **ON/OFF/VOLUME CONTROL SWITCH** to the **LOW VOLUME** (🔊) or **HIGH VOLUME** (🔊) position. To turn the unit **OFF**, slide the switch to the **OFF** (●) position.

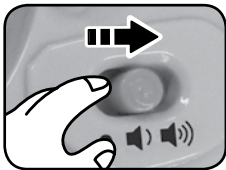


2. AUTOMATIC SHUT-OFF

To preserve battery life, the **VTech® Stack & Discover Animals** will automatically power-down after approximately 45 seconds without input. The unit can be turned on again by pressing one of the light-up buttons or by stacking or nesting one of the animals.

ACTIVITIES

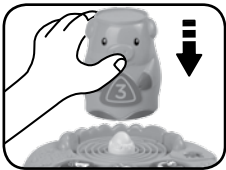
1. Slide the **ON/OFF/VOLUME CONTROL SWITCH** to turn the unit on. You will hear a sing-along song, a giggle sound and a fun phrase. The lights will flash with the sounds.



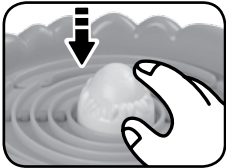
2. Press the **LIGHT-UP BUTTONS** to select the mode of play. You will hear each mode identified with a sing-along song and phrase indicating what the animals will teach. The lights will flash with the sounds.



3. Place the **ANIMALS** on the electronic base to learn, numbers, colours, shapes, animal names and sounds and hear playful tunes, depending on the selected mode. The lights will flash with the sounds.



4. Press the **EGG BUTTON** to hear sing-along songs, melodies and phrases. The lights will flash with the sounds.



MELODY LIST

1. Old MacDonald Had a Farm
2. Hey Diddle Diddle
3. Shoo Fly! Don't bother me
4. BINGO
5. Alouette
6. Mary Had a Little Lamb

SING-ALONG SONG LYRICS

Sing-along song 1

1, 2, 3, 4, 5.

Five animals to stack high!
Learning, playing all day long.
It's fun to live on the farm!

Sing-along song 2

Colours, colours, on the farm,
Animals have colourful charm!

Sing-along song 3

Circle, triangle, star, heart and square

Animals hold shapes with care!

CARE & MAINTENANCE

1. Keep the unit clean by wiping it with a slightly damp cloth.
2. Keep the unit out of direct sunlight and away from any direct heat source.
3. Remove the batteries when the unit will not be in use for an extended period of time.
4. Do not drop the unit on hard surfaces and do not expose the unit to moisture or water.

TROUBLESHOOTING

If for some reason the program/activity stops working or malfunctions, please follow these steps:

1. Please turn the unit OFF.
2. Interrupt the power supply by removing the batteries.
3. Let the unit stand for a few minutes, then replace the batteries.
4. Turn the unit ON. The unit should now be ready to play again.
5. If the product still does not work, replace with an entire set of new batteries.

If the problem persists, please call our Consumer Services Department on 01235 546810 (from UK) or +44 1235 546810 (outside UK) and a service representative will be happy to help you.

IMPORTANT NOTE:

Creating and developing **VTech®** products is accompanied by a responsibility that we take very seriously. We make every effort to ensure the accuracy of the information, which forms the value of our products. However, errors sometimes can occur. It is important for you to know that we stand behind our products and encourage you to call our Consumer Services Department on 01235 546810 (from UK) or +44 1235 546810 (outside UK), with any problems and/or suggestions that you might have. A service representative will be happy to help you.



**CLASS 1
LED PRODUCT**



vtech®

PRODUCT WARRANTY



Thank you for choosing this quality product from VTech. We hope it will bring many hours of entertainment, imaginative play and learning.

1. The product detailed above is covered by a one year warranty from the date of purchase, against any defects in materials or workmanship.
2. The product may be returned to the place of purchase. Alternatively the product can be returned to VTech Electronics Europe plc (see address below), with proof of purchase, without proof of purchase no replacement will be provided.
3. VTech Electronics Europe plc will examine the product and if it is found to be defective due to faulty materials or workmanship, will replace the product at their discretion.
4. If the product covered by this warranty is damaged due to misuse, modification or unauthorised repair, or because of faulty batteries, battery discharge or incorrect electrical connections, then this warranty becomes void.
5. This warranty is personal to the original purchaser and is not transferable.
6. Breakages to the LCD screen are not covered by the warranty.
7. Returns to VTech Electronics Europe plc should include a cheque or postal order for £1.50 towards the cost of return postage and packaging.
8. Products returned to VTech Electronics Europe plc, should be addressed as follows and packed carefully to avoid damage in transit (Please do not include batteries or adaptor).
Please include details of the fault together with your name and address.

VTech Electronics Europe plc, c/o Tablogix Limited, 200 Milton Park, Abingdon, Oxon OX14 4TA

THIS WARRANTY IS OFFERED AS AN EXTRA BENEFIT AND DOES NOT AFFECT CONSUMERS' STATUTORY RIGHTS.

This warranty is valid for the UK and Eire only. For products purchased outside the UK and Eire, please contact your local distributor or place of purchase.

